



 **KEITH**
Engineering Inspired Design.

MISSION

KEITH’s mission is to create, expand upon, preserve, and enhance our communities.

VISION

At the core of what we do are the people who live, work, and play in the environments we create. Our projects are interconnected, touching the lives of and contributing to the resilience of our communities. This concept is revealed in our Practice Lines.

LIFE

STORIES

we create the stage for everyday moments; expected and unexpected

ACCESS

CONNECTING

people with people; goods with people; industries with people

CAMPUS

GATHERING

creating environments to learn, to worship, to debate, and to heal

PLAY

ACTIVITY

creating dynamic experiences to engage all ages in exploration, interaction, learning, and movement

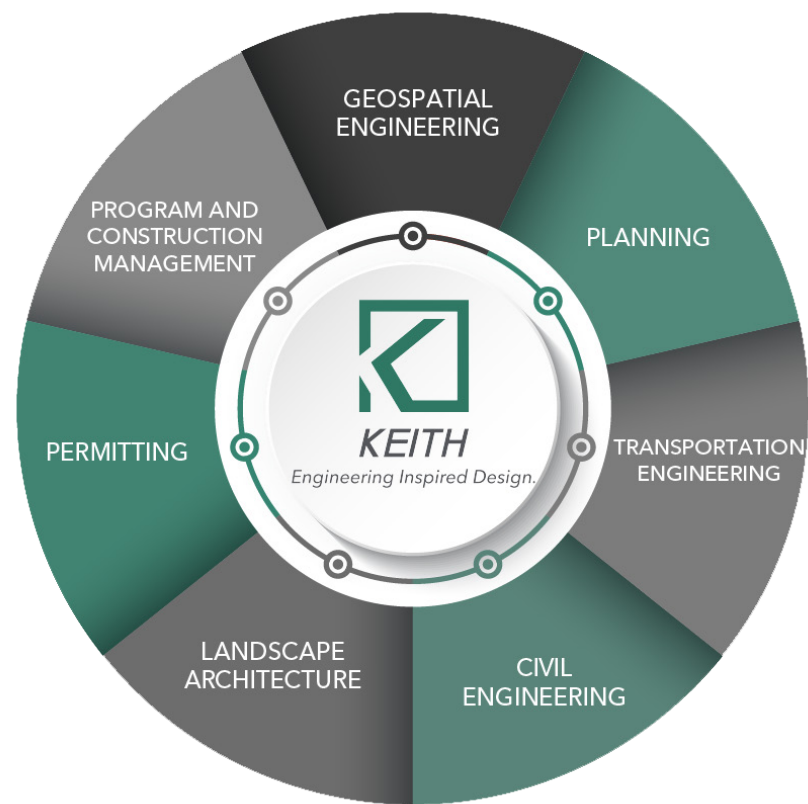
FACILITY

INFRASTRUCTURE

providing safety and support to create the essential backbone of our community



TRANS-DISCIPLINARY APPROACH

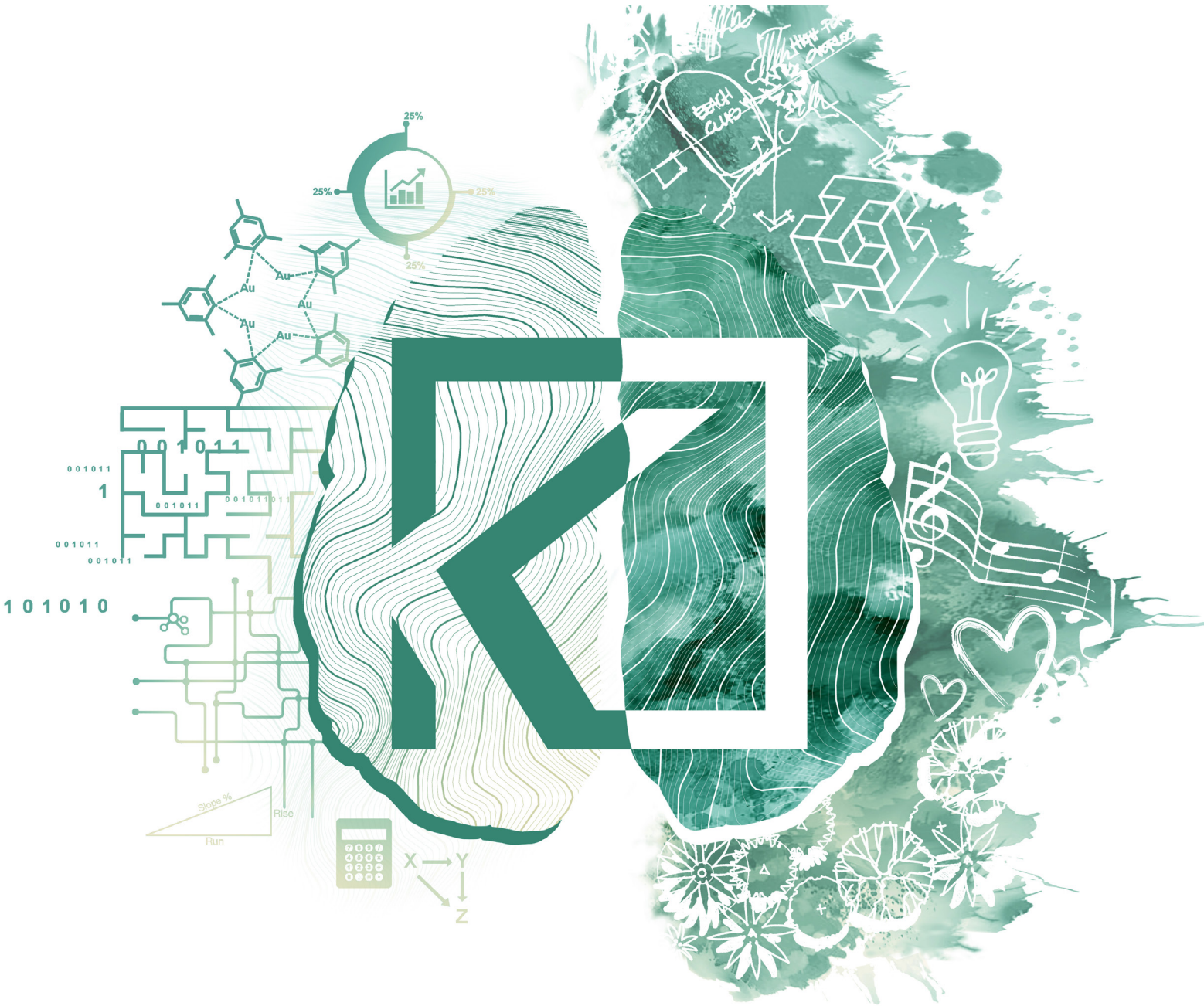


As a trans-disciplinary firm, KEITH provides in-house services including geospatial engineering (surveying and mapping and subsurface utility engineering), planning, civil engineering, utility coordination, transportation engineering, landscape architecture, and construction program management.

KEITH engages as an extension of our clients, with an analytical lens and a goal to collaboratively resolve development concerns that goes above and beyond the disciplines we provide.

With offices in Pompano Beach (HQ), Miami, West Palm Beach, Port St. Lucie, and Orlando, the KEITH Team is constantly building upon our 60-year history, shaping communities across the world with *Engineering Inspired Design* solutions.

When analytical thought and creativity align, the results are sustainable and prolific project design. KEITH's trans-disciplinary team of professionals carefully plans and executes design with the perfect balance of right-and left-brain intention.



KEITH ACCESS

CONNECTING

People with people, goods with people, and industries with people. Roadways, ports, waterways, airports, railways. KEITH Access projects assure access. They have no borders. They are open and inviting to all; an integral part of our neighborhoods. They connect us to other places, other neighborhoods, other people, and other experiences.



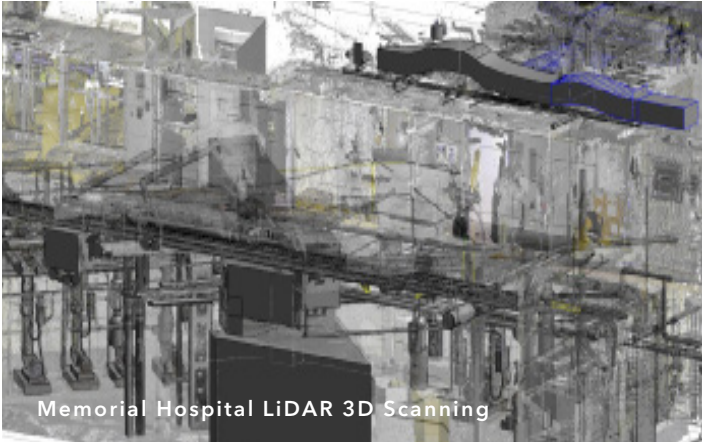
KEITH CAMPUS

GATHERING

Creating environments in which to learn, worship, debate, and heal. Educational institutions, medical facilities, offices, places of worship. KEITH Campus projects shape our collective identity. They represent who we are as a community and are as unique and authentic as each of us. Their names and their image evoke the best versions of ourselves and our communities. We believe every place should physically express our ideas and our ideals.



Broward County Convention Center



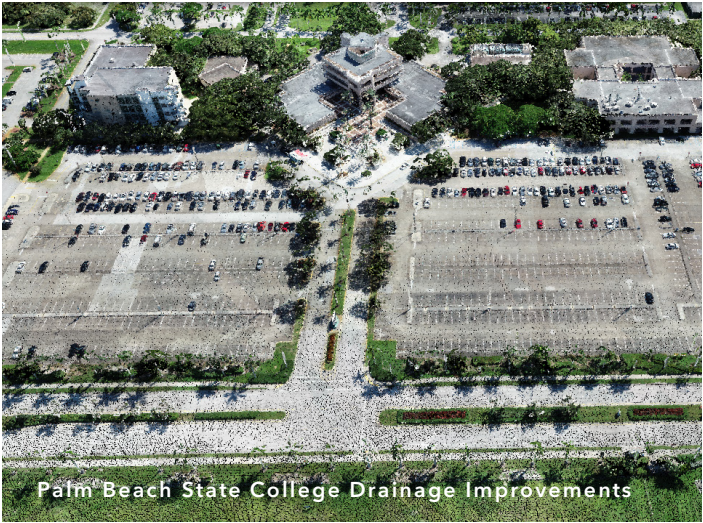
Memorial Hospital LiDAR 3D Scanning



Nova Southeastern University Center for Collaborative Research



Nova Southeastern University Sports Center



Palm Beach State College Drainage Improvements



John Knox Village



Marathon Public Library



Jackson Health West Campus

KEITH FACILITY

INFRASTRUCTURE

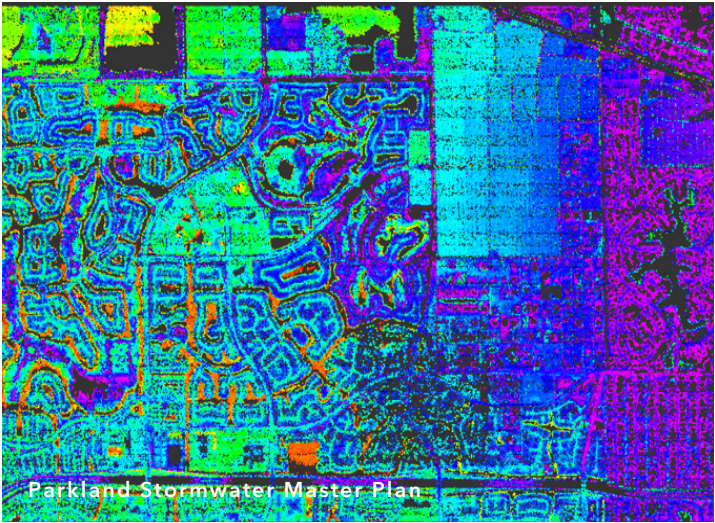
Providing safety and support to create the essential backbone of our community. Police stations, fire stations, emergency operations, treatment facilities, water/wastewater improvements. We believe that every place should secure natural and cultural resources for people to navigate freely through our collective infrastructure.



Bermuda Riviera Water Main Improvements



Miramar Police Headquarters



Parkland Stormwater Master Plan



Pompano Beach Fire Station 103



Hallandale Beach Fire Station 7



BCWWS Reclaimed Water Treatment



Fort Lauderdale Police Headquarters



Abbott Avenue Drainage Improvements

KEITH LIFE

STORIES

Creating the stage for everyday moments where one might expect the unexpected. Residential, commercial, mixed-use, hospitality. KEITH Life projects are safe and clean spaces that bring together people, activities, and events that excite and inspire us. Designed for flexibility, these places can evolve with our ever-changing interests. We believe every place should enrich our lives and allow us to learn more about ourselves.



KEITH PLAY

ACTIVITY

Creating dynamic experiences to engage all ages in exploration, interaction, learning, and movement. Parks, playgrounds, nature preserves, amenity areas. KEITH Play projects build community. They are the peoples’ space and allow voices to be heard, and are themselves; a reflection of community priorities and diversity. We believe every place can deepen a sense of community.



Everglades Holiday Park



Covered Bridge Passive Park



Centennial Park



Lake Worth Beach Complex



Levitt Pavilion Esplanade Park



Quigley Tennis Center



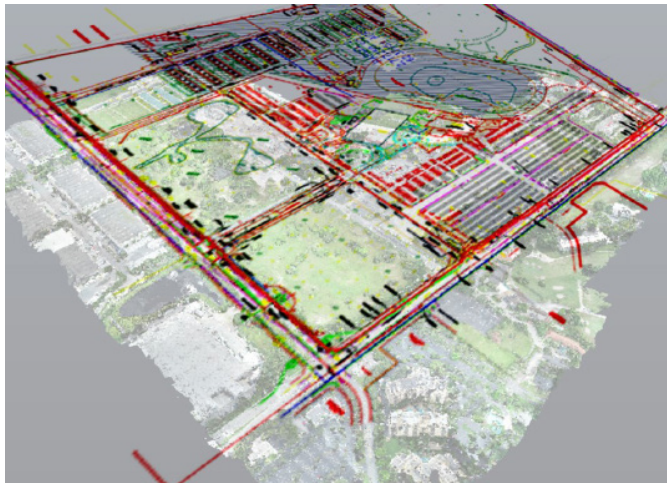
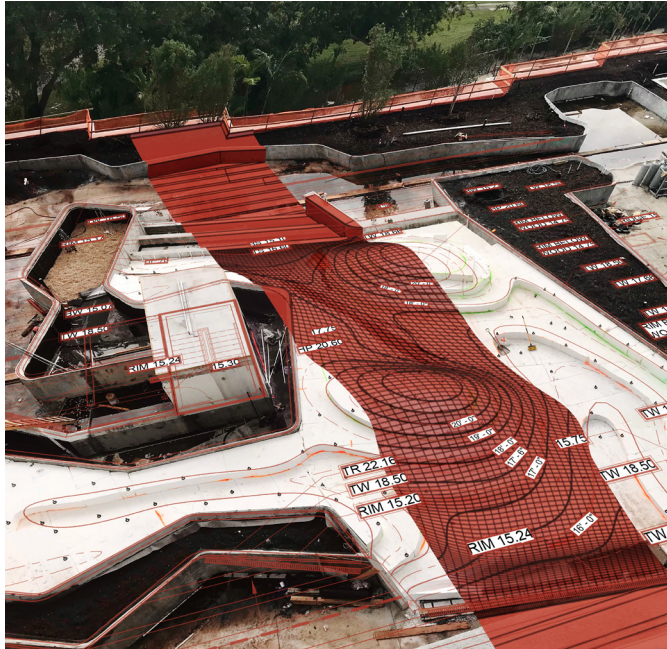
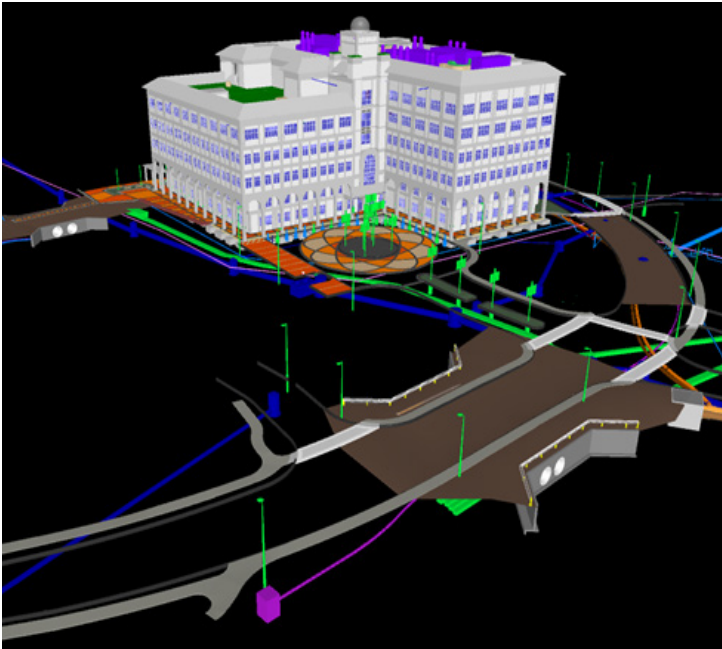
Fort Lauderdale Aquatics Center and Swimming Hall of Fame



DC Alexander Park

INNOVATION

We invest in technologies that benefit the process and outcome of our projects. Our team utilizes 3D scanning, LiDAR, drone imagery and footage, Revit/Civil 3D, BIM, CIM, AutoCAD, MicroStation, Sketch-up, Lumion, e-Builder, and Procore, among others, both in the office and in the field.



We understand the trifecta of ecology, economics, and society's needs form the prism through which design solutions are best interpreted. Sorting through these various layers spawns unique ideas that yield design and construction, as well as operations and maintenance solutions that strongly position an asset for optimal performance, successful community integration, and economic viability.

COMMUNITY

Our most valuable asset is that of our diverse communities and those that live, work, and play within. At KEITH, this becomes the foundation to each project design.

KEITH is a woman-owned, trans-disciplinary firm with a fundamental desire to inspire innovative opportunities and implement practical solutions; a true value that we bring to each project. Our holistic development solutions carefully blend technical expertise with creative problem-solving, or what we call *Engineering Inspired Design*.



The strength of an organization can be measured by the character of its staff. Our dynamic team of professional experts share a belief in technical excellence, integrity, and client service. These ideals converge to deliver exceptional value and commitment to the communities that we serve.



www.KEITHteam.com